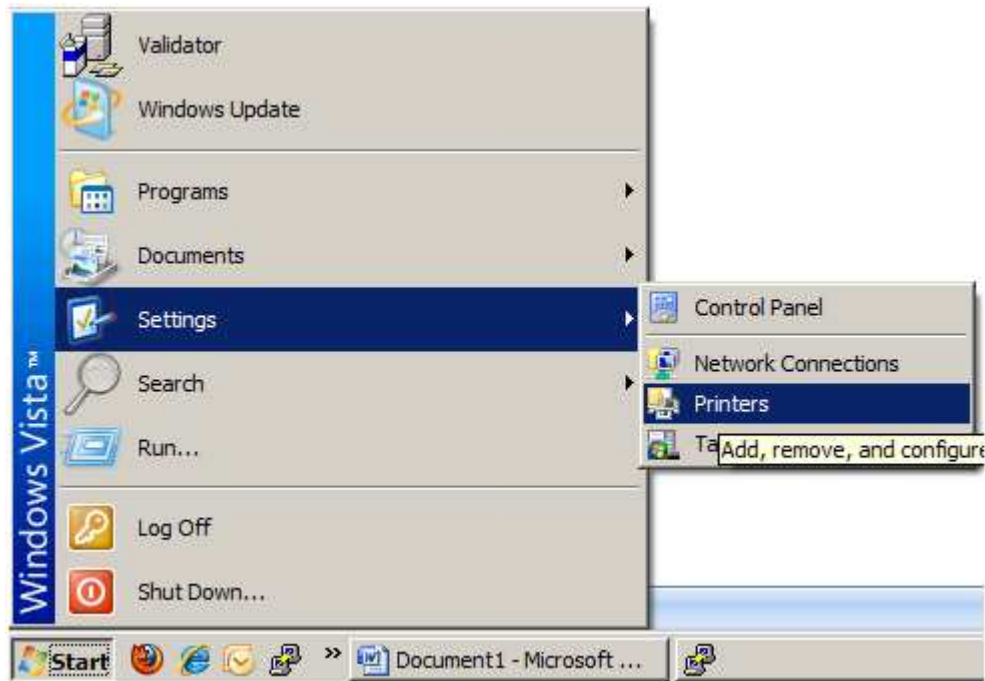
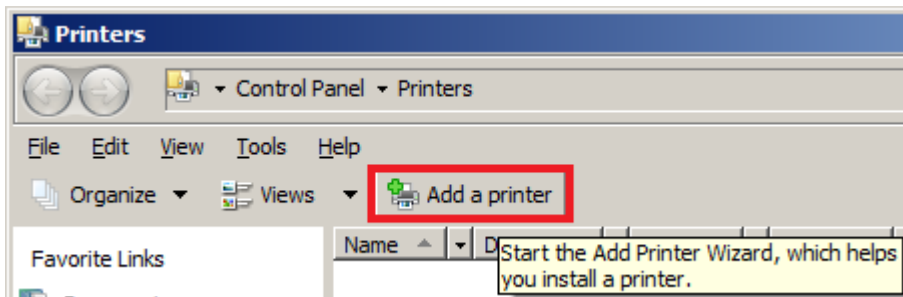


# Network TIFF Printer Setup

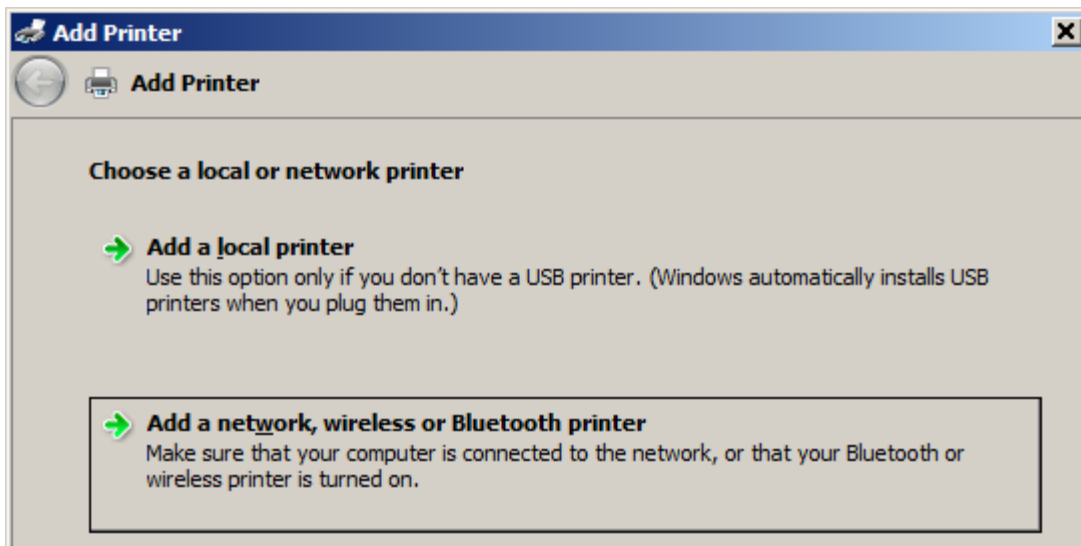
Go to **Start -> Settings -> Printers**.



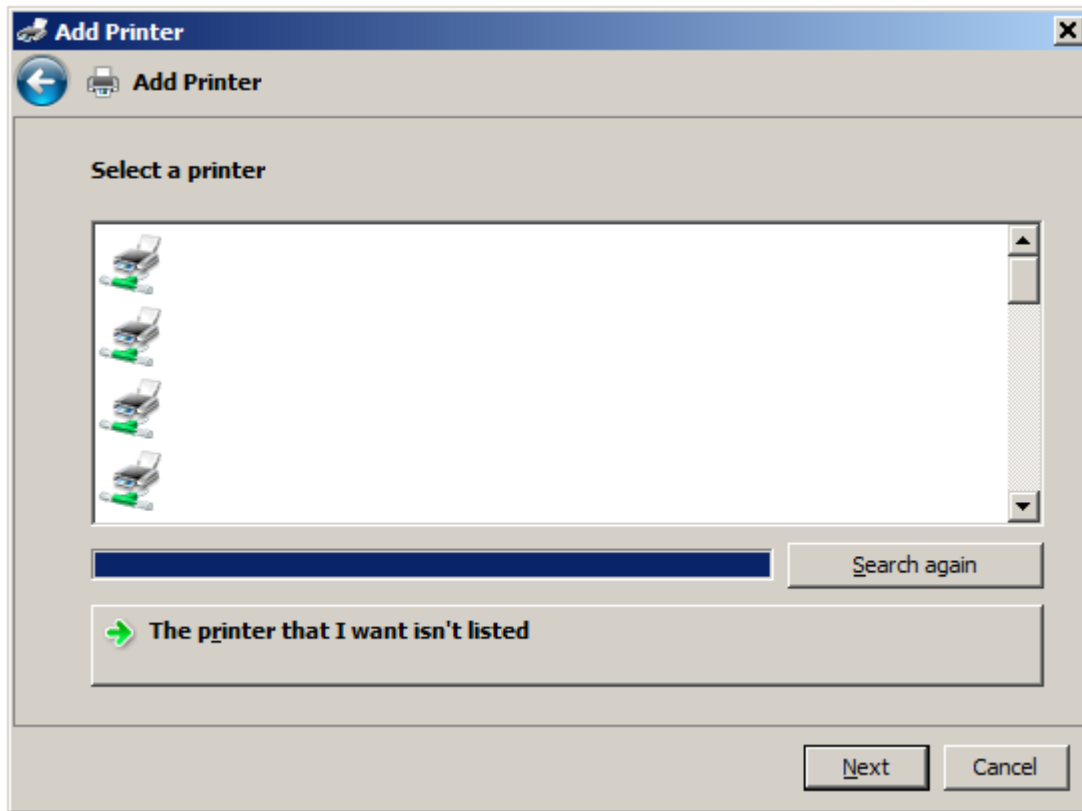
Click **"Add a printer"**.



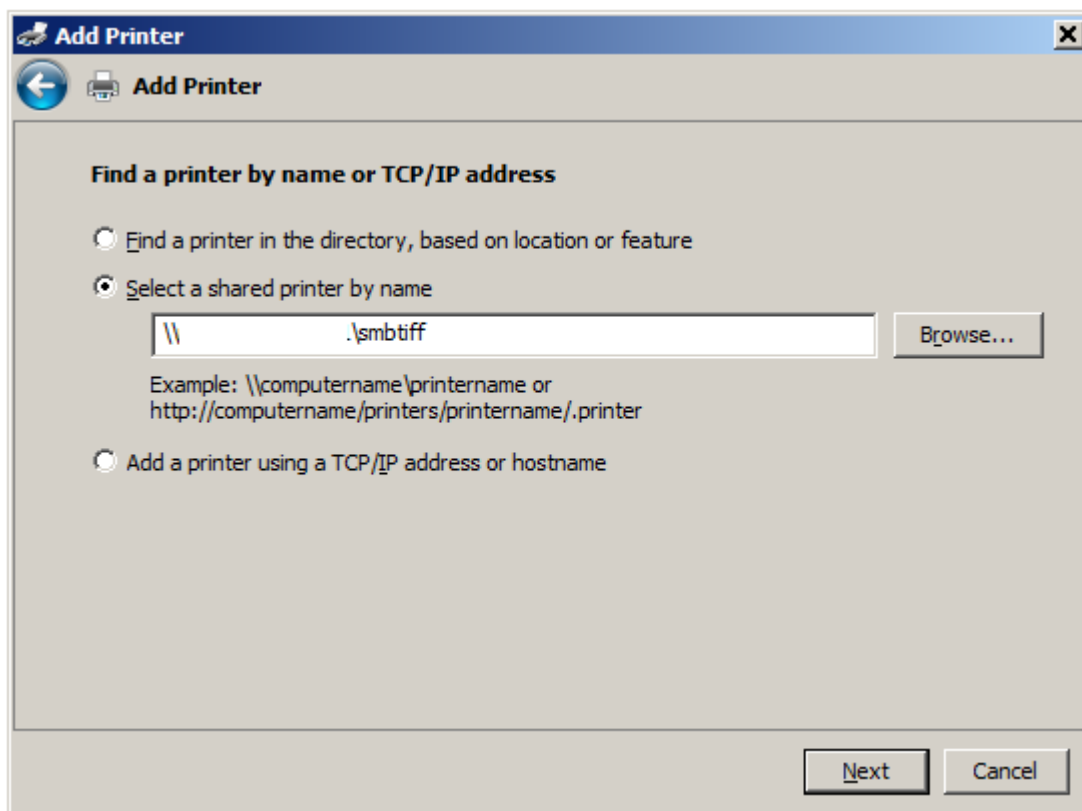
Choose **"Add a network, wireless or Bluetooth printer"**.



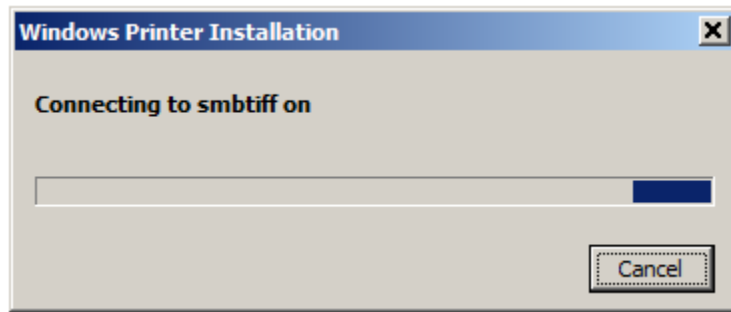
After it finishes searching, click on **“The printer that I want isn’t listed”**.



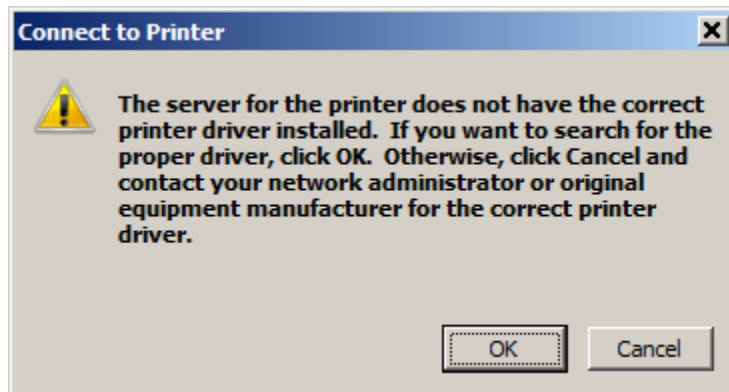
Check **“Select a shared printer by name”** and type in **“\\SERVERNAME\smbtiff”**. Click **Next**.



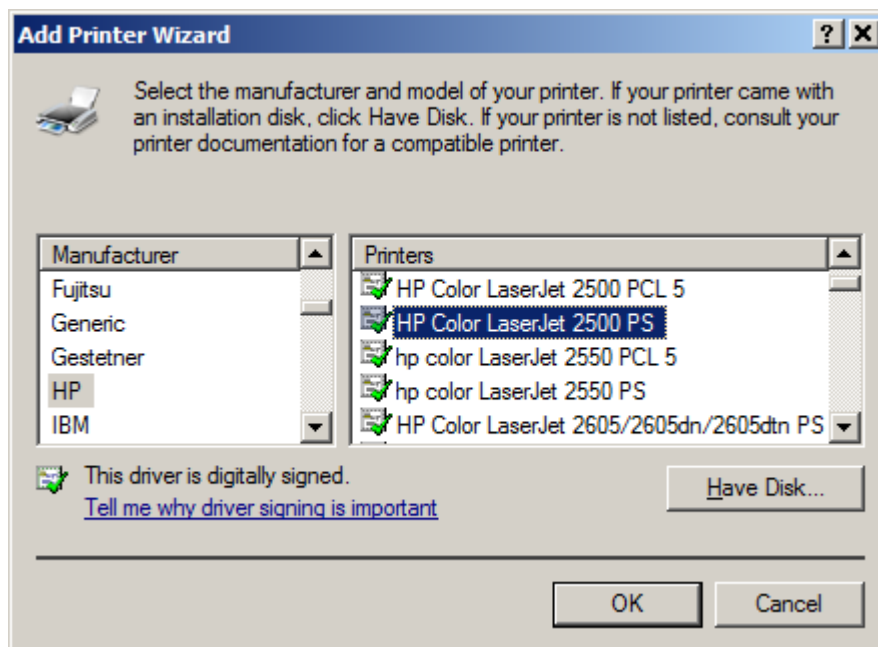
This window will show for a while...



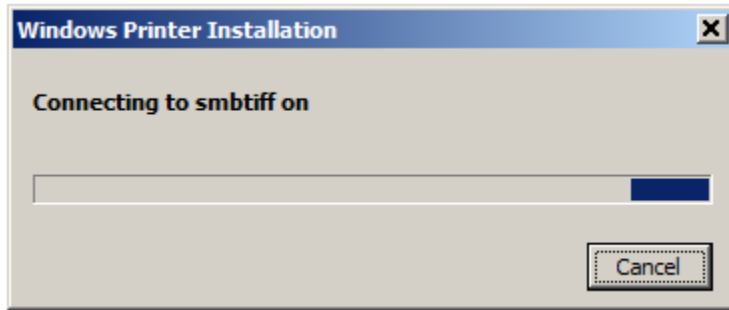
When this warning pops up, click **OK**.



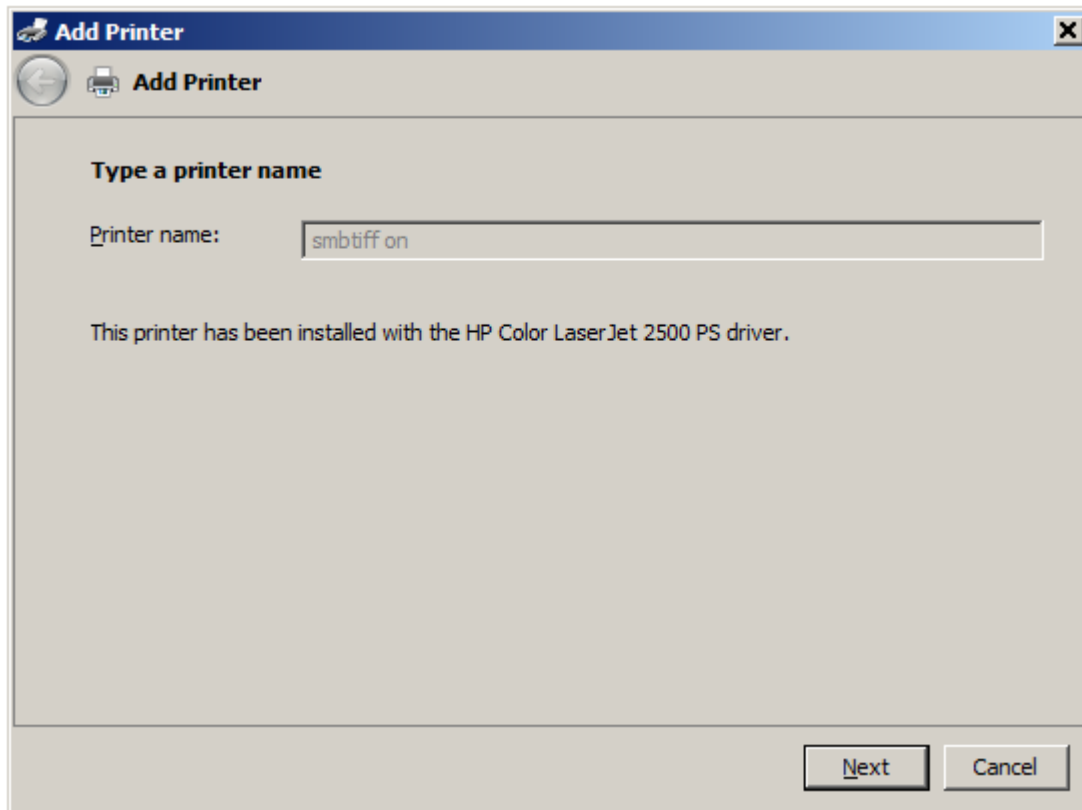
When the “**Add Printer Wizard**” window comes up, choose **HP** as the manufacturer and “**HP Color LaserJet 2500 PS**” as the model. Click **OK**.



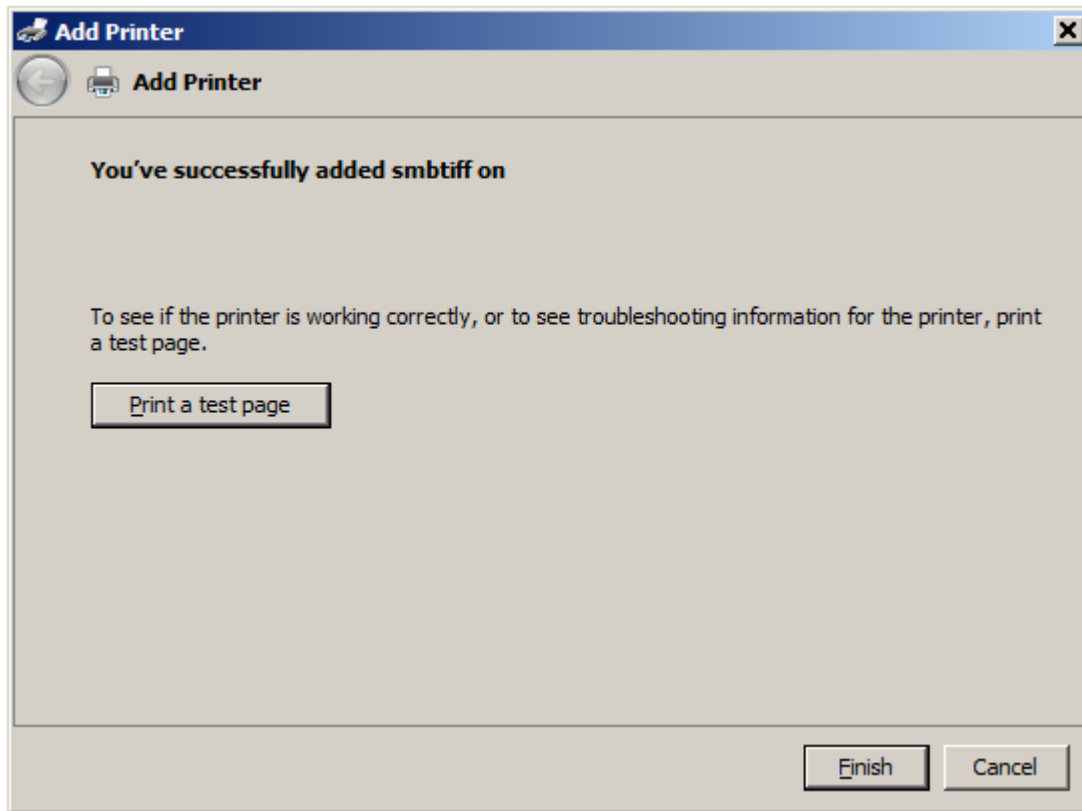
This window will show for a while...



Click **Next**.

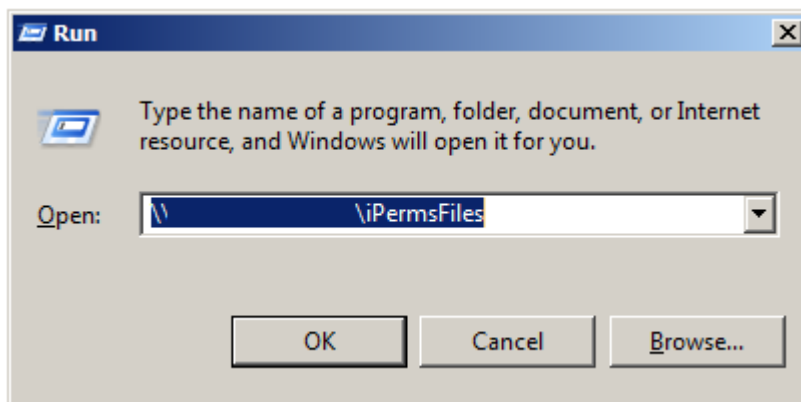


Click **Finish**.



Now you have the printer installed. You can now print documents to TIFF format.

To retrieve your TIFF files, go to **Start** -> **Run** and type in "\\SERVERNAME\iPermsFiles" and click **OK**.



You can make a shortcut to this by dragging the “network folder” icon to your desktop, as illustrated below.

